



Rhino CW-50 / LC-55

COMMERCIAL DOUBLE HUNG

5800 SERIES

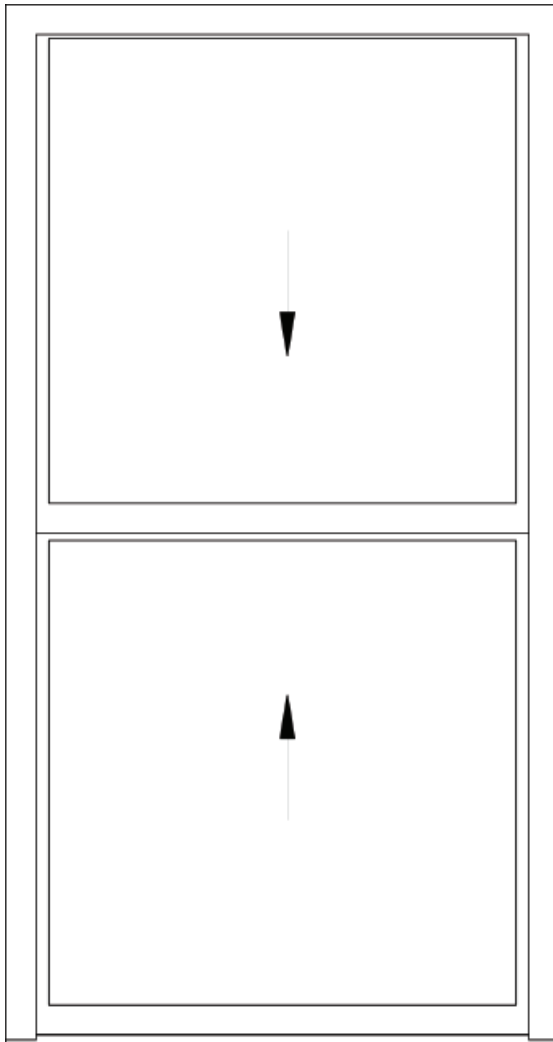
AAMA TEST RESULTS

MODEL	CLASS	TEST SIZE	AIR INFILTRATION (cfm/sq.ft.)	WATER (psf)	SWL ¹ (psf)	U-VALUE w/LoE ² /Argon	SHGC ²	VT ³	CONDENSATION RESISTANCE	SOUND TRANSMISSION CLASS	
5800	LC-PG55-H	60"X99"	.03@25 mph	8.25	82.5	.45	.20	.46	42	N/A	N/A
5800	CW-PG50-H	60"X99"	.08@50 mph	8.25	75.0	.45	.20	.46	42	N/A	N/A

¹Structural Wind Load • ²Solar Heat Gain Coefficient • ³Visible Transmittance
 TESTED AND CERTIFIED TO AAMA/WDMA/CSA 101/I.S.2/A440-08
 U-VALUE/SHGC/VT/CRF TESTED TO NFRC 100/200/500



STANDARD DOUBLE HUNG OPTIONS



SILL



P.O. BOX 3203
 SIOUX CITY, IA 51102
 PHONE: 402.494.6000
 FAX: 402.494.6765
 TOLL FREE: 800.475.5061

COMMERCIAL ALUMINUM WINDOWS



Rhino CW-50 / LC-55

COMMERCIAL DOUBLE HUNG

5800 SERIES



**P.O. BOX 3203
SIOUX CITY, IA 51102
PHONE: 402.494.6000
FAX: 402.494.6765
TOLL FREE: 800.475.5061**



enviro  sealed
windows™

COMMERCIAL ALUMINUM WINDOWS



Rhino CW-50 / LC-55

COMMERCIAL DOUBLE HUNG

5800 SERIES



GerkinTM
WINDOWS & DOORS





A

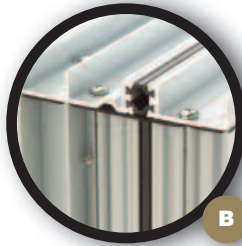
Gerkin™

WINDOWS & DOORS

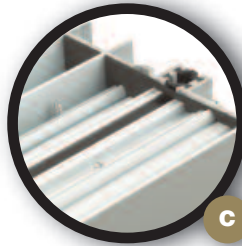
Quality since 1932

Our primary focus has been to manufacture energy saving window and door products. Throughout our history we have established ourselves as an innovator in the design and manufacturing capability of insulated windows and doors.

Stringent product testing and innovative design has allowed our products to evolve as market and consumer needs change. In the winter of 1989-90 we started to conceptualize and design our Rhino Commercial Aluminum window series. Today we have several commercial window styles in the Rhino line. This window series consists of a commercial horizontal slider, casement, hopper, awning, fixed and hung windows. Each Rhino window reflects the design and manufacturing expertise we've implemented over the years. We also publish our AAMA test results to back up our claims of product performance and quality.



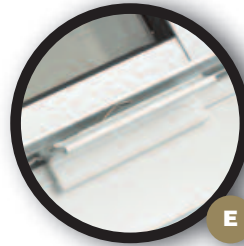
B



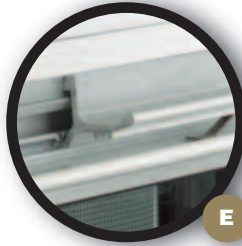
C



D



E



E



F



G



G



H



I



J



Rhino CW-50 / LC-55

C O M M E R C I A L D O U B L E H U N G

CW-50 FEATURES

- A** CW-PG50-H AAMA rating at a test size is 60 x 99 (Tested to AAMA/WDMA/CSA 101/I.S.2/A440-08 specifications)
- B** 4 5/16" frame depth with an Isobar thermal break system used to enhance the thermal values of the frame and sash.
- C** All frame and sash corners use polyethylene gaskets for tighter air and water seals.
- D** Gerkin uses attractive flush mount tilt latches, allowing both sash to tilt in for easy cleaning and removal.
- E** The lower sash uses an automatic latching system with the use of spring loaded sill locks. This eliminates the need for cam locks and offers instant security when the window is closed.
- E** Self-latching locks on the top sash at the head keep the top sash from dropping down while operating the lower sash. The top sash is fully functional and can be operated or tilted in for cleaning.
- F** The double hung incorporates a sloped sill which eliminates the need for weeps under the sash. This allows for superior water drainage.
- G** The window balances are available in Class 1 or Class 5 options. Class 1 balances lift 30% of the sash weight while Class 5 lifts 70% of the sash weight.
- G** Balance shoes easily release the sash after tilting in to 90 degrees. This eliminates the need to raise one balance higher than the other during removal, thus making removal easier.
- H** The upper and lower sashes interlock together, which helps reduce deflection and creates a snug fit for a superior air infiltration rate.
- I** The double hung sash and frame have multiple weather-strip locations uniquely positioned so that weather-stripping is never disconnected, which results in outstanding air infiltration performance.

- J** The full length screen has an extruded frame for superior durability over rolled form. The screen fits cleanly inside the main frame for protection and easy removal.
- Factory applied nail fins are available. Nail fins can be used as a flush face fin or in a more traditional 1" set back.
- 1" insulated glass with metal glazing retainers is standard. Gerkin insulates its' own glass with the use of a Duralite™ warm edge spacer. Our standard glass options are Low E3, bronze tint, grey tint, obscure and tempered. Internal grills are also a standard option. Special order glass is available.
- Gerkin offers, panning, snap trim, subframe, structural mulls and matching fixed windows.

ONLINE INFORMATION

Our website at www.gerkin.com offers AutoCAD details of window drawings and written specifications for architectural use. The Gerkin estimating department offers quoting and shop drawing services. Distributor catalogs are also available for over the counter quoting and architectural detail referral.

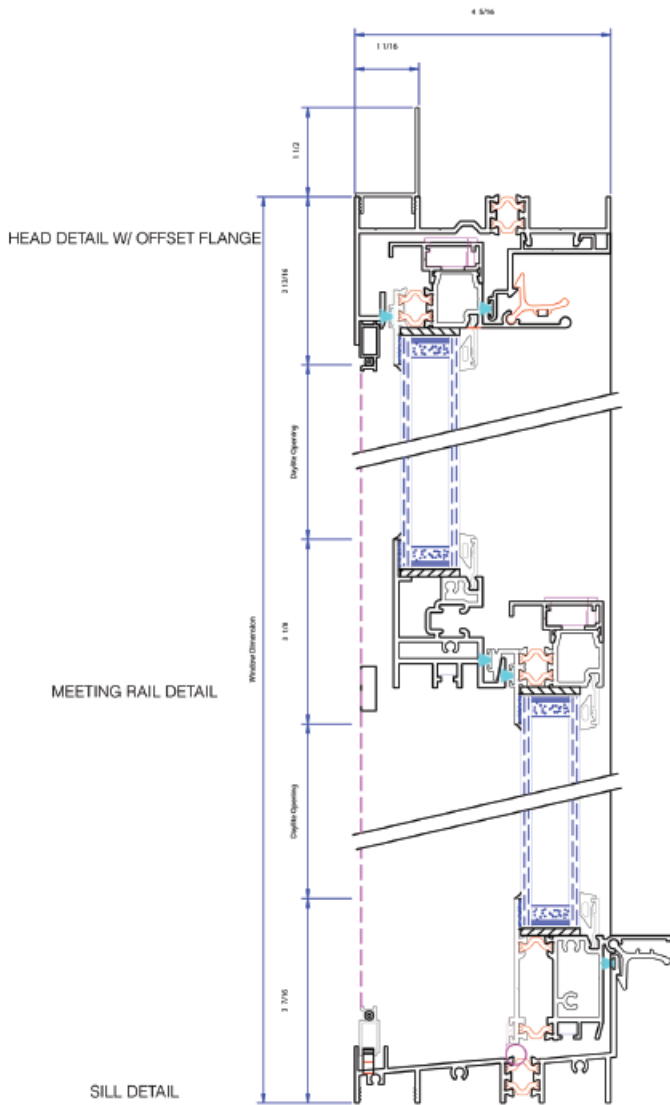
COLORS

Standard colors are baked enamel white, bronze anodized and clear anodized. Custom colors are available.

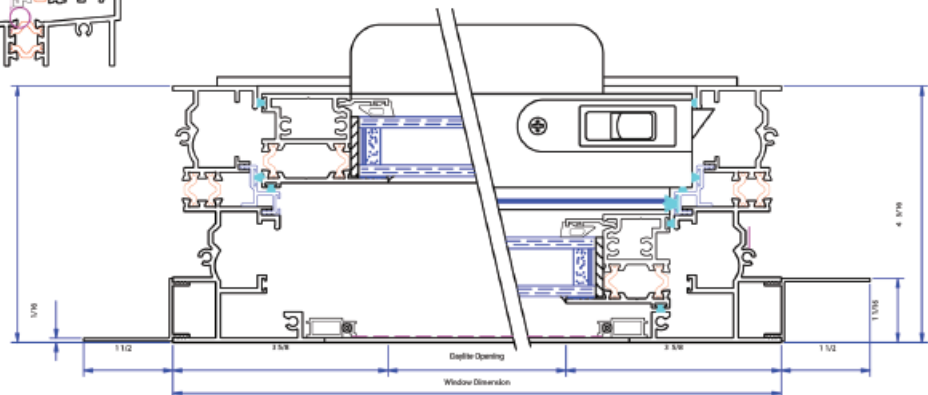


5800 SERIES

CW-50 HORIZONTAL & VERTICAL DETAILS



C-50 Double Hung Windows



LOWER SASH JAMB DETAIL W/ FLUSH FLANGE

UPPER SASH JAMB DETAIL W/ OFFSET FLANGE